

TECHNICAL FILE:

Switches

1.- Technical specifications

Rated voltage: 230 V ~

Rated current: 10 AX

Manufactured according to EN 60.669-1

Flush mounting in universal box according EN-60-670 standard

Screwless terminals (accepts from 1 mm² to 2.5 mm² cross section cable)

2.- Material characteristics

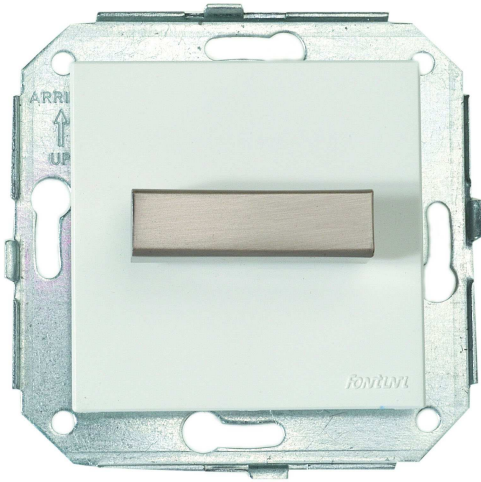
Main body: Polyamide 66 (PA66)

Glow wire test: 850 °C

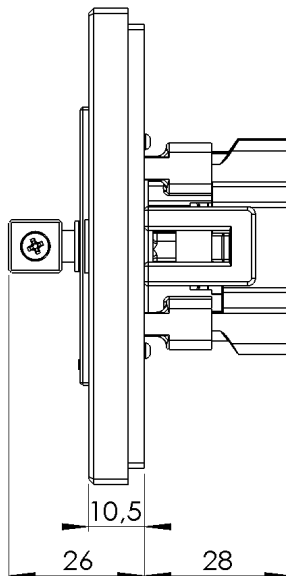
Terminals: CuZn33

3.- Certifications

Certificados AENOR, NF, VDE y GOST



Height dimensions (size in mm)



Installation diagram

