

**TECHNICAL FILE:**

**Momentaneous switch**



**1.- Technical specifications**

Rated voltage: 250 V ~

Rated current: 10 AX

Protection degree: IP20

Springed single-pole switch. Returns when released

Compatible with KNX or any other domotic systems

Manufactured according CEI 60.669-1 standard

Surface and flush mounting in universal box (with frame) according IEC60.670 standard

Screw terminals (accepts from 1 mm<sup>2</sup> to 2.5 mm<sup>2</sup> cross section cable)

**2.- Material characteristics**

Body: Polyamide 66

Glow wire test: 850 °C

Terminals: Brass CuZn33

Screws: Steel CQ15. Slotted Phillips pan head. Metric thread M3.5

Toggle: Brass (chrome, antique bronze and golden finish)

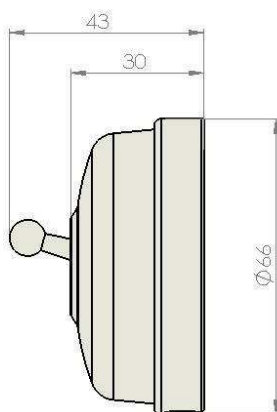
External body: Porcelain and brass

**3.- Certificate approvals**

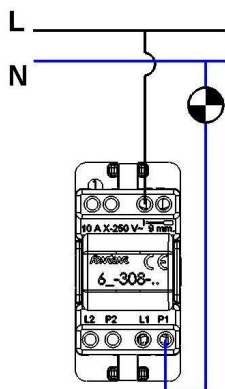
CE certificate



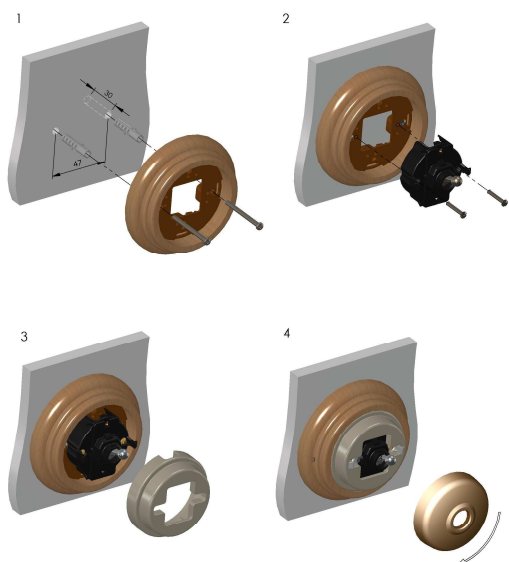
**Dimensions (size in mm)**



Installation diagram



Surface installation with Garby frame



Surface installation with Venezia or Garby Colonial frame  
(adaptor 30-950-98-2 NOT included)

