

TECHNICAL FILE:**Switches****1.- Technical specifications**

Rated voltage: 250 V ~

Rated current: 10 AX

Protection degree: IP20

Manufactured according CEI 60.669-1 standard

Surface and flush mounting in universal box (with frame) according IEC60.670 standard

Screw terminals (accepts from 1 mm² to 2.5 mm² cross section cable)

2.- Material characteristics

Body: Polyamide 66

Glow wire test: 850 °C

Terminals: Brass CuZn33

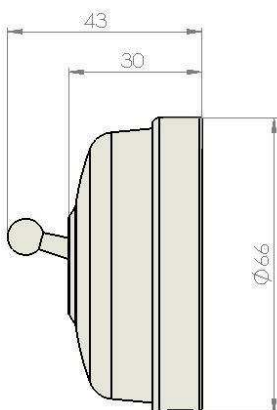
Screws: Steel CQ15. Slotted Phillips pan head. Metric thread M3.5

Toggle: Brass (chrome, antique bronze and golden finish)

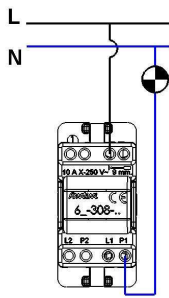
External body: Porcelain and brass

3.- Certificate approvals

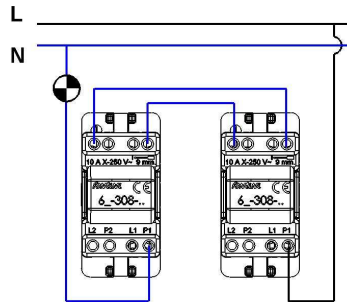
CE certificate

Dimensions (size in mm)

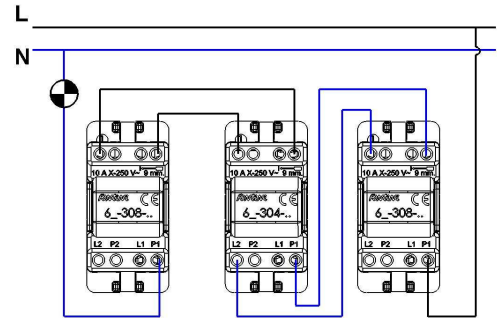
Installation diagram



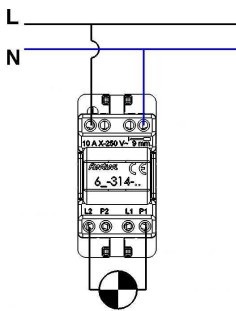
One pole switch



Two-way switch Two-way switch

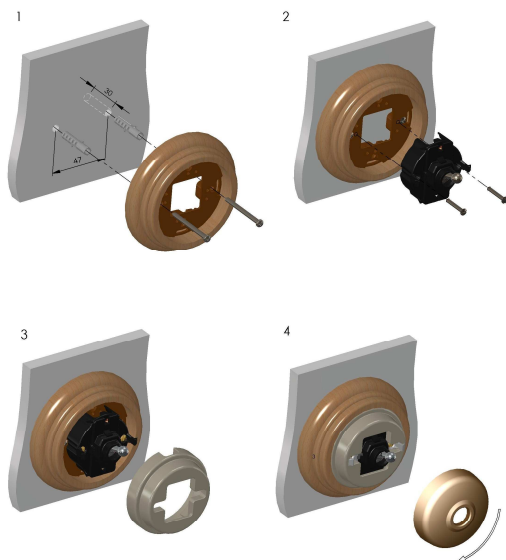


Two-way switch Crossing switch Two-way switch



Two pole switch

Surface installation with Garby frame



Surface installation with Venezia or Garby Colonial frame
(adaptor 30-950-98-2 NOT included)

